

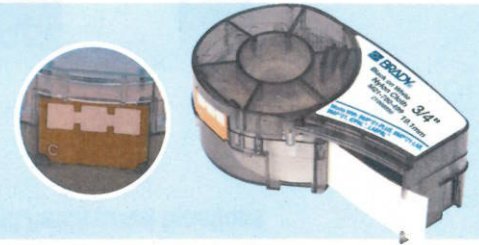
BMP™21-PLUS Hand-held Label Printer DEMO BOARD



Tough on the Outside. Smart on the Inside.

The BMP™21-PLUS hand-held label printer combines a tough exterior with smart printing capabilities for wires and cables, terminal blocks, patch panels, flat surfaces and much more

Integrated Smart Cell technology for fast and easy label printing



Indoor/Outdoor Vinyl:

- 5 year average outdoor durability in temperatures from -40°C to 82°C
- adheres to irregular, curved or rough surfaces
- resists to grease, oil and most industrial chemicals



Self-laminating:

- excellent abrasion and smudge resistance
- can be used in dirty or harsh environments
- self-extinguishing
- available in 4 dimensions: 19.05 mm, 24.40 mm, 30.48 mm and 38.10 mm



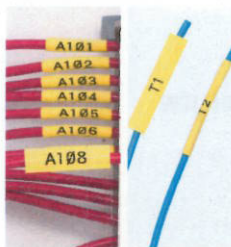
Breaker Box Labelling:

- easy identification of distribution boxes and control panels
- define multiple modules in various widths



Symbols:

104 different symbols, including general identification symbols, electrical symbols, home electrical symbols, datacom symbols and safety symbols



Sleeving:

- B-342 PermaSleeve material in white and yellow
- Available in 4 dimensions:

Cable-Ø	Height
3.20 mm	5.96 mm
4.80 mm	8.50 mm
6.40 mm	11.15 mm
9.50 mm	16.38 mm



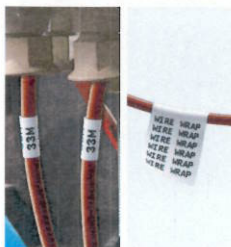
Font Autosizing and Fixed Label Length:

- Maximizes legend size to size of the label.
- Allows to set size of the label so each label is sized to the specifications



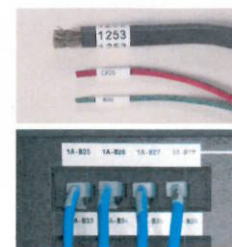
Bar Coding:

Code 39 or code 128



Advanced serialisation and wrapping:

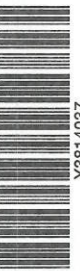
- reduces the time needed to print serialised data
- automatic multiple repeat of the legend for 360° text visibility



Wire marking, Terminal Block and Patch panel functions:

- One simple step to identify your different wires, terminal blocks and patch panels
- extra small 6 mm tape available for high density patch panels

B-595 Indoor/Outdoor vinyl colour range:



BMP™21-PLUS Hand-held Label Printer DEMO BOARD

Indoor/Outdoor Vinyl

LABELS FROM
9.53MM TO 19.05MM

RESISTS TO

GREASE, OIL

AND MOST

INDUSTRIAL
CHEMICALS

M21-750-595-RD/ M21-500-595-BR/-GN/-OR/ M21-250-595-YL

Symbols



M21-750-423

Bar Coding



M21-500-430/ M21-750-488

Self-laminating

WIRE & CABLE

AVAILABLE IN
4 DIMENSIONS

EXCELLENT ABRASION AND
SMUDGE RESISTANCE

B-427

M21-1000-427/ M21-1250-427/ M21-1500-427

Sleeving

B-342 PERMASLEEVE

HEAT - SHRINKABLE
SELF - EXTINGUISHING

M21-250-C-342/ M21-250-C-342-YL

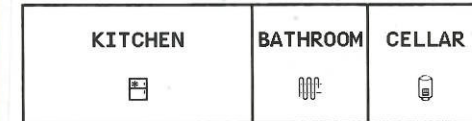
Advanced Serialisation & Wrapping

12345
12346
12347
12348
12349

P-6808
P-6809
P-6810
P-6811
P-6812

M21-500-499

Breaker Box Labelling



M21-750-423



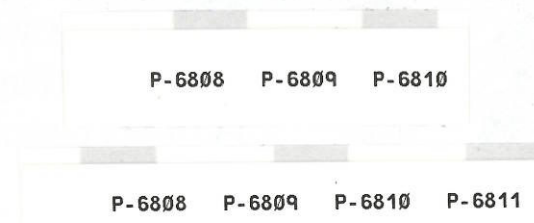
Font Autosizing and Fixed Label Length

B-595

EASY PEEL LABELS

M21-750-595-WT

Wire Marking, Terminal block and Patch panel functions



P-6808 P-6809 P-6810 P-6811

M21-375-499-TB/ M21-500-499-TB